




2023

Annual Report



Table of Contents



A Message from Our Executive Director	03
Sustainable Development Goals	06
YSYD Physical Presence	07
Earthquake Response	09
Protection	18
Physical Rehabilitation	21
Mental Health and Psycho-Social Support	32
Early Recovery	37
Livelihood	42
Voluntary Return and Reintegration	49
Conclusion & Closing	52



A MESSAGE FROM OUR EXECUTIVE DIRECTOR

Dear our Beneficiaries, Partners and Employees,

The year of 2023, in which the wounds of the earthquake process were healed at the national and regional levels, once again demonstrated the decisive importance of humanitarian aid activities carried out by non-governmental organizations. The year 2023 was an important test in terms of providing the services needed by our citizens and asylum seekers affected by the Kahramanmaraş earthquake on 6 February 2023; in this sense, our Association has taken care to increase its activities in close coordination with public institutions and organizations and in solidarity with other sector stakeholders.

The earthquake, which created a regional crisis dynamic, affected large masses and caused both internal migration movements and critical problems in terms of living conditions. With a strategic structuring in line with the priorities of the activity period in question, our Association mobilised all available and potential resources to meet the urgent and priority needs of earthquake victims. As a pioneer not only at the national level, but also in international aid campaigns, it has worked with devotion in the transcontinental transfer of basic necessities.

We are grateful to all our stakeholders, especially YSYD employees and volunteers who worked day and night, for their high solidarity and altruism.



Türkiye has experienced great difficulties in the last year. But these difficulties also revealed something; our capacities for cooperation, solidarity and community resilience. Even though we have gone through very difficult times in the last year, as YSYD, we tried to improve and expand our activities in the field day by day. The year 2023 brought forth significant trials, most notably the devastating Kahramanmaraş earthquake. This disaster left widespread destruction in its wake, displacing countless families, and leaving communities reeling from the aftermath. The extent to which this crisis has disturbed our life and well-being cannot be overstated. In the face of unprecedented challenges and crises, YSYD remains steadfast in its commitment to providing vital assistance to those in need. Throughout the year, our dedicated teams have worked tirelessly to address the urgent humanitarian needs arising from natural disasters, conflict, and displacement. In response, YSYD mobilized swiftly, providing emergency aid, shelter, food, water, sanitation and hygiene, protection, medical assistance, and psychological support to the affected populations, underscoring our unwavering dedication to alleviating human suffering in times of crisis.



Furthermore, 2023 continued to witness the enduring refugee crisis, with millions of individuals forcibly displaced from their homes due to conflict, persecution, and violence. This protracted crisis has placed immense strain on host communities and humanitarian organizations alike, highlighting the critical need for sustained support and intervention. YSYD remained at the forefront of these efforts, extending a lifeline to refugees and internally displaced persons (IDPs) through various programs aimed at meeting their essential needs and restoring dignity in the face of adversity.

As we reflect on the challenges and achievements of the past year, it is clear that the need for humanitarian aid has never been greater. The tireless efforts of our staff, volunteers, and partners have made a tangible difference in the lives of millions, yet much work remains to be done. To achieve and over-achieve 17 Sustainable Development Goals, we act with the motto [#sharethekindness](#). With your continued support, YSYD remains persistent in its mission to provide support, hope, assistance, and solidarity to those who need it most.

SUSTAINABLE DEVELOPMENT GOALS



1 NO POVERTY



End poverty in all its forms everywhere

2 ZERO HUNGER



End hunger, achieve food security and improved nutrition and promote sustainable agriculture

3 GOOD HEALTH AND WELL-BEING



Ensure healthy lives and promote well-being for all at all ages

4 QUALITY EDUCATION



Ensure inclusive and equitable quality education and promote lifelong learning opportunities for all

5 GENDER EQUALITY



Achieve gender equality and empower all women and girls

6 CLEAN WATER AND SANITATION



Ensure availability and sustainable management of water and sanitation for all

10 REDUCED INEQUALITIES



Reduce inequality within and among countries, regions, provinces



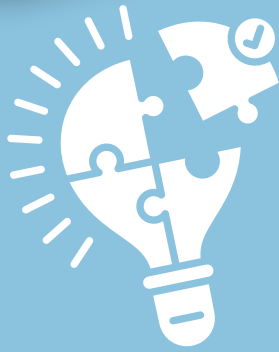
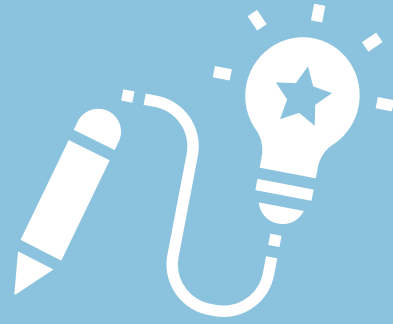
19 physical offices in 13 provinces in Türkiye as of activity year of 2023



staff structure



01
STAFF STRUCTURE
YSYD has continued its operation with 471 professional staff who has the significant experiences in different expertise fields.



02
GENDER DISAGGREGATION
50,73% of the staff is female, while remaining 49,26 is male.

03
FIELD OFFICE
442 staff is working based in Ankara, at the headquarter level.



04
HEADQUARTER
29 staff is working based in Ankara, at the headquarter level.

KAHRAMANMARAŞ

earthquakes

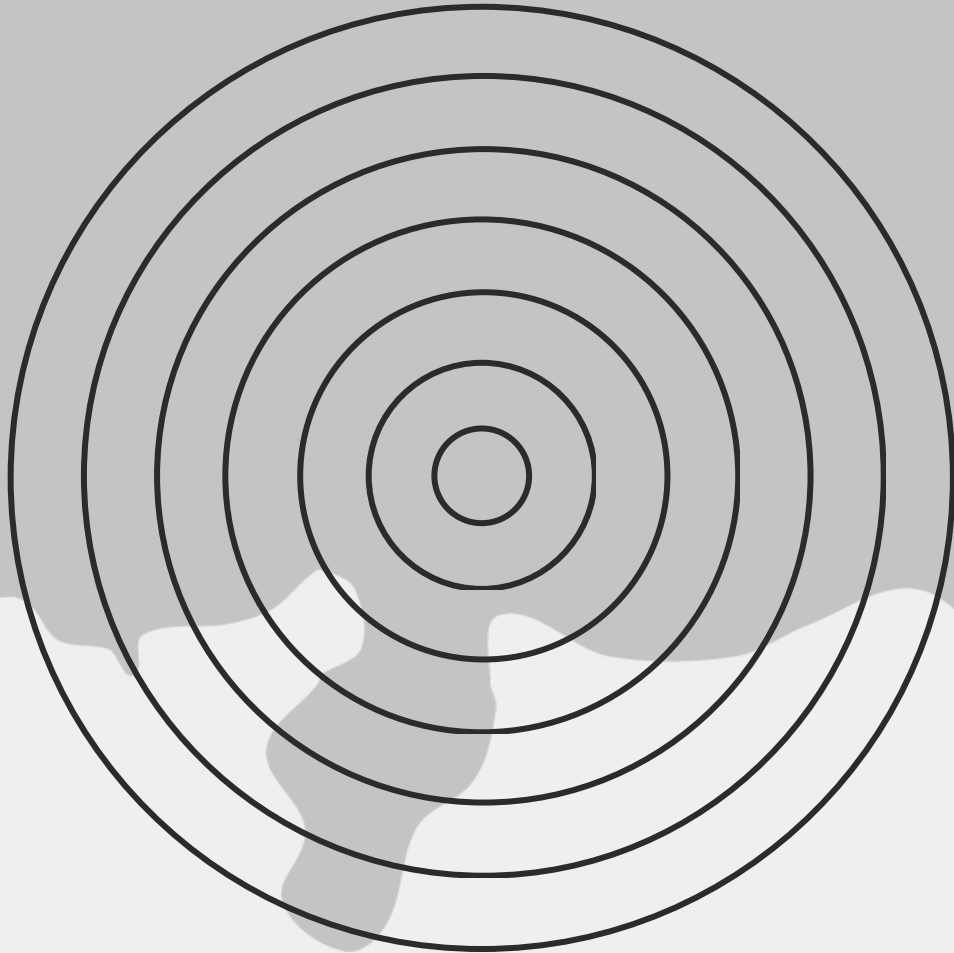


Based on the assessment, it would not be wrong to estimate that roughly one out of **every six Turkish citizens** and **almost half of all SuTPs** have been affected by the earthquakes.

KAHRAMANMARAŞ

earthquakes

Türkiye and Syria were hit by a series of debilitating earthquakes measuring 7.7 and 7.6 magnitudes as of 6th of February 2023. The disaster was unprecedented in its scope and the magnitude of the destruction it caused. Two devastating earthquakes struck Türkiye and Syria, killing more than 52,000 people—including at least 45,968 people in Turkey and 7,259 people in Syria—and injuring many thousands. The 7.8- and 7.5-magnitude earthquakes also destroyed critical infrastructure, leaving the communities in the area in urgent need of humanitarian assistance.



KAHRAMANMARAŞ

earthquakes

Aftermath the earthquake as of February 6, 2023, YSYD Board Members with its Senior Management Team held an immediate meeting and determine our top priority is to mobilise all resources by activating its institutional channels with international community and swiftly provide quake victims multi-sectoral services including but not limited the search and rescue services, donation of mass in-kind and cash-based social assistance, health and protection.

YSYD took an immediate action with 325 professional staff, 658 volunteers in the provinces of Adana, Adiyaman, Hatay, Kahramanmaraş, Malatya and Osmaniye.

YSYD staff worked devotedly to deliver hundreds of thousands of aid parcels consisting of 622 lorries to Hatay under the leadership of Konya Metropolitan Municipality to the earthquake victims in need.

YSYD shipped 648 trucks of water packets to the region and organised 63 trucks of flour delivery to Hatay to meet the need for food.

KAHRAMANMARAŞ

earthquakes

As a result of the campaigns carried out with international donor organisations, YSYD shipped and distributed 15 pallets of new coats, winter clothes and children's toys to Hatay.

As a result of the campaign conducted in the United States of America, YSYD, in coordination with AFAD, shipped and distributed 10 pallets of Water Survival Boxes to Hatay.

YSYD has completed the procurement and installation of 475 mobile shower cabins, 475 mobile toilets and 325 disabled toilets, and ensured that the relevant WASH facilities are put into use in the needed areas in cooperation with the municipality.



EARTHQUAKE RESPONSE



475 mobile toilets procured and installed



325 mobile toilets for persons with disabilities



475 mobile showers

EARTHQUAKE RESPONSE



29.093

direct beneficiaries participated in structured and semi-structured psycho-social support services



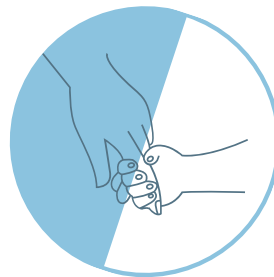
10.071

clients received individual mental health counseling



20.009

individuals with protection and socio-economic needs identified and referred to the relevant services



15.652

children beneficiaries received structured support

EARTHQUAKE RESPONSE



12.840 tents distributed



557 kitchen sets delivered



16.400 blankets distributed



221.600 hygiene kits distributed

EARTHQUAKE RESPONSE



102.290 food baskets distributed



1650 grocery card delivered



4027 cash-based social assistance provided



7600 water survival boxes distributed



PROTECTION



Protection

Services

YSYD is dedicated to upholding the rights and dignity of vulnerable populations through comprehensive protection activities. In alignment with the Inter-Agency Standing Committee (IASC) guidelines and standards, our protection interventions aim to mitigate risks, prevent harm, and promote the well-being of individuals and communities affected by crisis. Protection services include case management and community-based protection activities.

In 2023, YSYD provided protection services to a total of 247,304 beneficiaries within the protection cluster. This encompassed a diverse demographic, with 54.97% Turkish nationals, 27.69% Syrians, and 17.34% Afghans benefiting from our interventions. Our commitment to inclusivity is reflected in the demographics served, with 51% female, 47% male, and 2% non-binary individuals receiving assistance. 411,059 referrals were realized and most of the referrals were done for health, food security, shelter, WASH and education clusters. Assistance include besides case management, financial and in-kind assistance were provided according to the care plans of each beneficiary. In this context; 13,435 diapers, 13,318 PSS kits, 23,191 dignity kits, 12,521 assistive devices, 17,069 cash support, 2,282 vouchers, 3,281 medical cost payment, 2,199 rent cost payment, 3,549 transportation assistance and 1,086 accomodation assistance.

Protection

Services

Across age groups, our protection activities reached individuals spanning the life cycle, with 9% between 0–4 years old, 30% aged 5–17 years old, 43.3% aged 18–49 years old, and 17.4% aged 50 years and above. This comprehensive approach ensures that the unique needs and vulnerabilities of different age groups are addressed effectively.

Moreover, our interventions extended beyond the immediate aftermath of crises, with 60.2% of beneficiaries residing in earthquake-affected areas, and the remaining 39.8% residing in other provinces. This distribution underscores our commitment to reaching vulnerable populations wherever they may be, ensuring that no one is left behind.

YSYD's protection activities are guided by a robust case management process, encompassing screening, assessment, planning, implementation, follow-up, case closure, and evaluation. This systematic approach ensures that beneficiaries receive tailored support and assistance, addressing their specific needs and circumstances.

In addition to protection services, YSYD prioritizes the prevention and response to gender-based violence (GBV) and child protection concerns. GBV case management and child protection activities were provided according to identified needs, ensuring that survivors receive the necessary support, care, and protection.



PHYSICAL REHABILITATION



Physical Therapy

Rehabilitation

YSYD is providing the physical rehabilitation in the post-operative and rehabilitative care for the persons with disabilities and at risk of developing disability among the refugee and host communities. The primary aim of the health service is to improve the health condition of persons with disability, to increase disability inclusion, to develop refugees and vulnerable host community's health resilience, through the provision of physical therapy sessions, a health special needs fund, mental health, informative and community-based psycho-social and rehabilitation group sessions and advocacy activities. Equally important another aspect of the health services is to supplement the existing Turkish healthcare system with the specialised health services – not establishing a parallel system. YSYD has been provided such healthcare services in the provinces of Ankara, Hatay and İstanbul of Türkiye as a static, mobile and tele-health methodologies. YSYD PTR Department is offering three types of physical therapy such as restorative, maintenance, and prevention physical therapy.



Funded by
European Union
Civil Protection and
Humanitarian Aid

MSYD  ASRA

MÜTECİLER VE SİĞİRMACILARLA YARDIMLAŞMA DAYANISMA VE DESTEKLEME DERNEĞİ
ASSOCIATION OF ASSISTANCE SOLIDARITY AND SUPPORT FOR REFUGEES AND ASYLUM-SEEKERS
جمعية المساعدة و الدعم و التضامن مع اللاجئين و طالبي اللجوء

BİZİ ARAYIN
CALL US
اتصل بنا



ÇAĞRI MERKEZİ ■ CALL CENTER ■ مركز الاتصال
0850 455 0000



Physical Therapy

Rehabilitation

YSYD PTR Department is mainly providing an early diagnosis and prompt intervention to at-risk clients (secondary prevention), and provide interventions to prevent a regression of a chronic or irreversible condition.

All facilities have already been registered on the recruited doctors' behalf at the level of the Ministry of Health. During the completion of the history of a patient, the physical therapists will examine the history of her or his body composition and body composition wellness.

The full package of the treatment plan also includes the delivery of fully customized assistive device delivery and/or ergotherapy - for the eligible patients. The physical therapy sessions are always being designed as reasonable in terms of frequency, duration, and type; anticipated to provide significant benefit, especially in terms of functional gains; and provided by an individual with the appropriate credentials, in coordination with the YSYD Doctors.



Physical Therapy

Rehabilitation

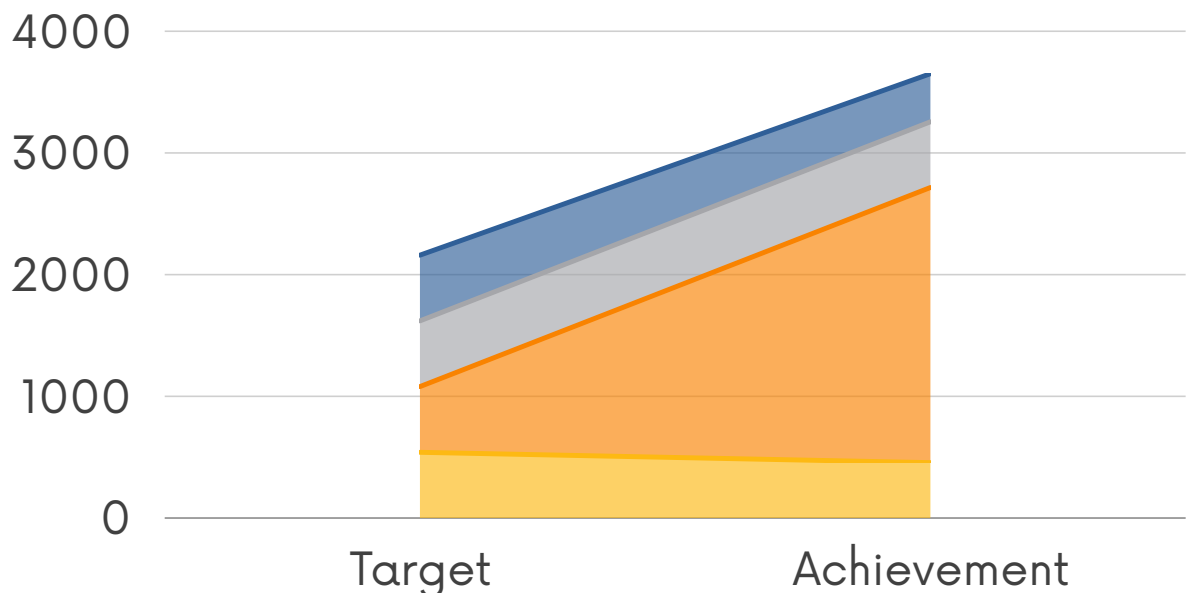
Another important dimension of YSYD's integrated and unified service approach is the provision of assistive and mobility devices as a complementary component of the total rehabilitation process. YSYD Doctors are examining the patients; then if it is found as proper to accelerate the treatment process and increase early-functionality, the eligible ones are being internally referred to begin the device assessment. The kinds of devices used by subjects do vary with disability type. Personal care/hygiene devices (such as eating, grooming, toileting aids) are more utilized by people with neuromuscular impairment and those with limb loss. Transportation devices (car hand-controls, vehicle wheelchair-lifts, and electric carts) are used most by people with neuromuscular impairment and least by hearing-impaired persons. People with hearing and visual impairment use communication devices more than other disability types do.



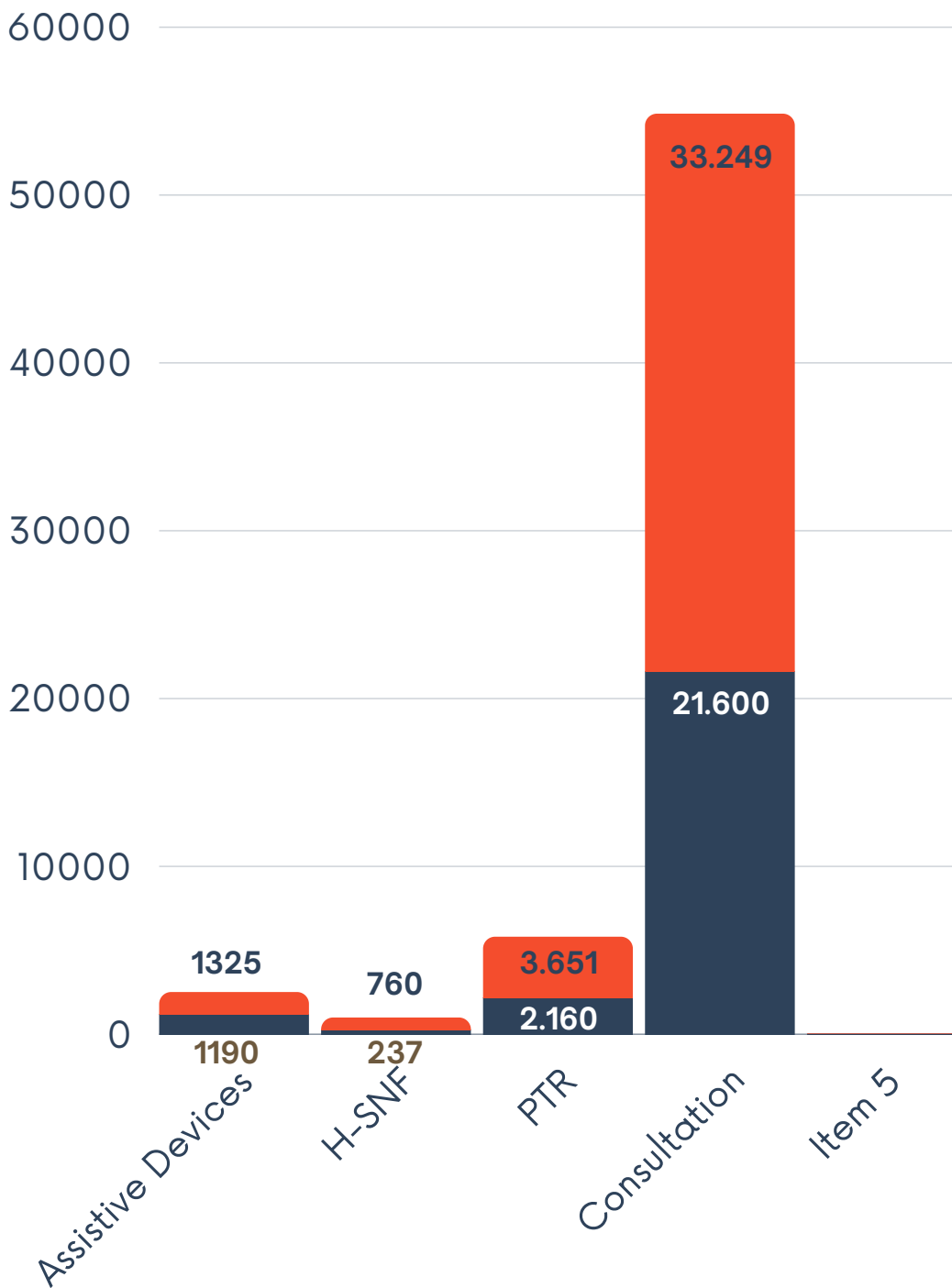
Physical Therapy

Rehabilitation

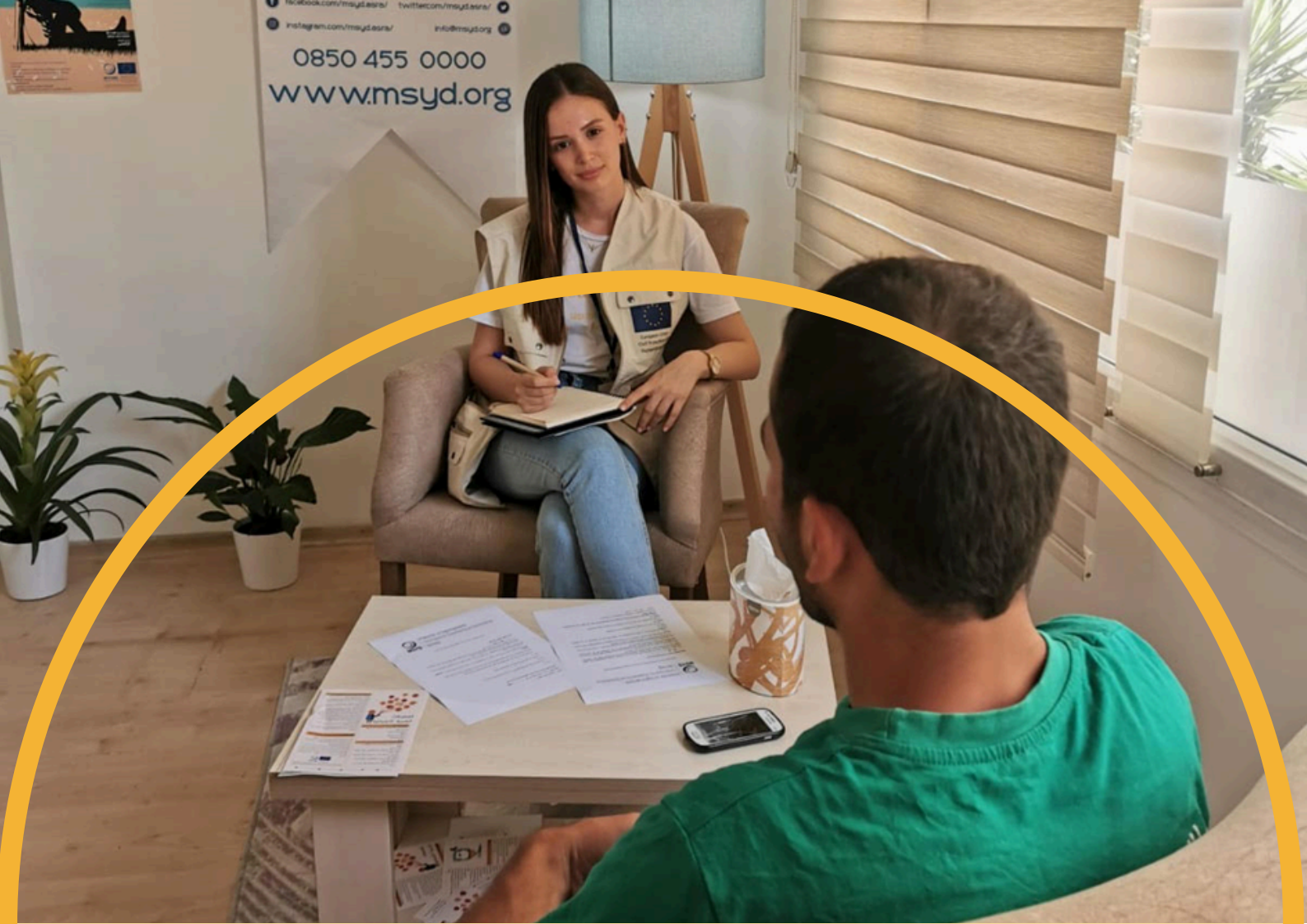
In the 2023 activity year, a performance acceleration that exceeded all target indicators was demonstrated. In this respect, while the number of direct beneficiaries who benefited from at least four sessions of physiotherapy and rehabilitation services was 3,651, this target group was 33,249 in the said period. In this respect, while the number of direct beneficiaries who benefited from at least four sessions of physiotherapy and rehabilitation services was 3,651, 33,249 beneficiaries were included in this target group in the said period.











MENTAL HEALTH AND PSYCHO- SOCIAL SUPPORT



Mental Health

Psycho-social Support

YSYD recognizes the critical importance of mental health and psychosocial support (MHPSS) in alleviating the suffering and promoting the resilience of individuals affected by crises. Our interventions are informed by the Inter-Agency Standing Committee (IASC) Guidelines on Mental Health and Psychosocial Support in Emergency Settings and the World Health Organization (WHO) recommendations, ensuring adherence to best practices and standards.

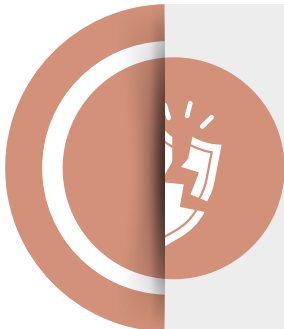
In earthquake-affected areas, the sudden and traumatic nature of the disaster can have profound impacts on the mental well-being of individuals and communities. YSYD's MHPSS interventions prioritize addressing the unique needs arising from this specific crisis context. The IASC guidelines emphasize the importance of providing immediate psychological first aid, including supportive listening, comfort, and practical assistance, to mitigate distress and promote coping mechanisms in the immediate aftermath of the earthquake.

Moreover, our interventions recognize the long-term psychological effects of earthquakes, including post-traumatic stress, anxiety, depression, and grief. YSYD implements mostly community-based psychosocial support programs to foster social cohesion, resilience, and collective healing. These interventions are tailored to the cultural and contextual nuances of earthquake-affected communities, ensuring relevance and effectiveness.

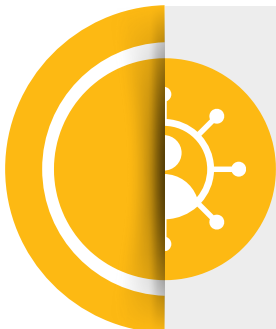
MHPSS WITH NUMBERS



10.071 CLIENTS
BENEFITTED FROM
INDIVIDUAL MENTAL
HEALTH CONSULTATION



29.093 DIRECT BENEFICIARIES
PARTICIPATED STRUCTURED
AND SEMI-STRUCTURED
PSYCHO-SOCIAL SUPPORT
SESSIONS



12.740 PSS KITS
DISTRIBUTED

Mental Health

Psycho-social Support

YSYD provided tailored MHPSS interventions to 2,229 beneficiaries through individual sessions and 10,896 beneficiaries through group psychosocial support (PSS) sessions. These sessions served as safe spaces for individuals to express their emotions, share experiences, and develop coping strategies and covers peer-support groups, psycho-education sessions and child-friendly spaces (CFS) activities. In order to improve psychosocial wellbeing, peer support groups or individual sessions with specific topics with culturally grounded techniques are realized. Peer support groups are a valuable service and resource that brings affected people together with a similar issues so that they can feel supported by others, establish a sense of belongingness and can explore different point of views within a group that may have better understanding for the problem and each other. By discussing different point of views, they can raise awareness on and develop various coping mechanisms for shared challenges. The topics of the sessions are selected according to the field's dynamics, YSYD's previous field experience and various international resources on MHPSS and include both raising awareness and psychosocial support. Topics are effective communication, respect for diversity, problem management, positive thinking skills, stress management, coping with somatization, anxiety, etc. combined with non-formal education techniques.



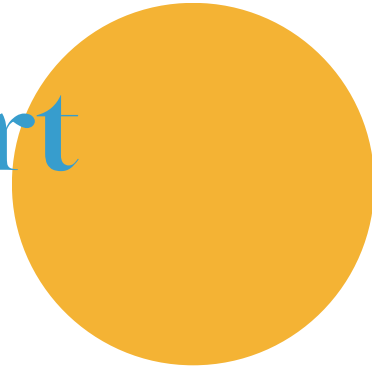
YSYD
insani yardım

sevgiliği paylaş

YSYD
insani yardım

Peer Support

Group Activities



MHPSS staff operates peer support groups for members, thus the priorities are directly based on their needs. Peer support groups are used to participants to take use of naturally available social support in the community, allowing them to create and sustain unique relationships. Peer support will enhance coping, social functioning, sense of safety and overall quality of life of beneficiaries. Moreover, CFS activities also planned according to beneficiaries' needs and backgrounds. Specialized modules were developed and applied by the MHPSS Unit for empowerment of psychosocial and emotional development and protection awareness of child beneficiaries.

These activities are carried out by the psychologists and psychological counsellors. Systems theory approach is embraced and issues are discussed on micro, meso, exo, macro and chronosystem. Moreover sessions on specific groups are being provided. The groups are consisted of 8-10 beneficiaries. The techniques include group psychotherapy and non-formal education techniques. Group activities mostly being used as a tool both preventive and mitigative. The topics mostly focused on stress management, coping with anxiety, depression, grief, ambiguous loss, somatization, post-traumatic stress disorder, post-partum depression and sleep hygiene, trauma-tapping, emotion regulation, mindfulness exercises, etc. On the sessions different techniques from group psychotherapy like; behavioral activation, activity scheduling, behavioral experiments, relaxation and stress reduction techniques, role play, etc. are being used.



EARLY-RECOVERY



Early Recovery

with Small-Grant Support

YSYD has worked to identify additional ways to support the recovery of those devastated by the earthquakes. Widespread damage to critical infrastructure and vast displacement left many people without access to income-generating activities, among many other basic needs. In partnership with Community Organised Relief Effort (CORE), YSYD has initiated a program to financially support small business and greenhouse owners whose livelihoods were jeopardized due to the earthquakes. In total, CORE provided more than \$100,000 to 58 small businesses and 19 greenhouses to help owners receive skill-upgrade and entrepreneurship training and ultimately regain their financial independence following the devastation. Within the scope of this project, 77 small business and greenhouse owners were supported, 5,250 hygiene kits and food baskets were distributed, and 516 kitchen sets were delivered to the affected households.

YSYD has assisted the selected business with a grants program that offers start-up stock, equipment, or other business needs for those who would occupy the newly built business park. Businesses has been assessed in terms of eligibility status of their own business development plan and then eligible ones received up to \$2,000 in specific assistance from the program.



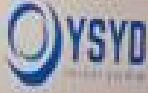
Early Recovery

with Small-Grant Support

The project consists of two main pillars: The first main part of the project aims to support the commercial center established by the Municipality in Hassa district of Hatay. Direct financial, technical, legal and entrepreneurship support has been provided to 42 small-business workplaces affected by the earthquake in the trade center established by the municipality. The small-businesses selected for the support within this project include a wide variety of business lines such as butcher, greengrocer, barber, glassware and so forth. Thus, through the opening of businesses, the YSYD has contributed to establishing and maintaining the commercial life of both the region and beneficiaries, especially in terms of increasing their ability to reach out to the livelihoods and strengthening the development of the region.

The second pillar of the project aims to support women entrepreneurs in several districts of Hatay by providing them with the necessary skills and developing their existing livelihoods abilities. In this context, it is aimed to provide greenhouse installation and operation support to women who have worked in greenhouses before or who want to establish a greenhouse and ensure family income and food security. The selected women entrepreneurs will be supported and contributions will be made to their participation in economic life and women empowerment in many aspects such as economic, social and personal empowerment.

CORE
Community Organisation for Refugees



Bu işyeri, Mübteciler ve
Sığınmacılara Yardımlayıcı Derneğine ve
Destekleme Derneği (YSD) ve
CORE tarafından desteklenmiştir.

This business place was supported by
Association of Assistance Solidarity and
Refugees and Asylum Seekers (YSD)
and CORE.

YSYD
insa

0650 45



LIVELIHOOD



Vocational Courses

with Partner Universities

Sustainable livelihoods is an innovative approach that requires going beyond traditional production and economy in order to prevent poverty. YSYD works by adopting the principle of sustainable livelihoods and socioeconomic empowerment in all its work in the field of livelihoods. Various supports and programs are offered to asylum-seeker and refugee communities through projects concentrated in provinces such as Karabük, Karaman, Giresun and Sivas. YSYD's work in these provinces aims to support the settlement process of asylum-seekers and refugees, increase their employment opportunities, provide access to education opportunities and facilitate their adaptation into society. In addition, YSYD's work in these provinces aims to encourage and develop social entrepreneurship activities among asylum seekers and refugees. In this way, environments are created where asylum seekers and refugee individuals can create their own livelihoods, contribute to the local economy and play a stronger role within their own communities.



SAYED TARIQ HUSSAIN

Vocational Courses

with Partner Universities

Vocational training aimed at increasing livelihoods program is carried out in cooperation with Karabük University, Sivas Cumhuriyet University, Karamanoğlu Mehmetbey University, Karaman Provincial Directorate of National Education and Public Education Center. Thanks to the cooperation between these institutions, the refugees are offered appropriate vocational training opportunities, enabling participants to develop their skills in areas appropriate to their interests and skills.



Vocational Training Courses

Online Theoretical and Practical Courses
Formal On-Site Theoretical and Practical Courses in Universities

01



Educational Courses

Turkish Language Course
English Language Course
Chess Course
Painting Course

02



Awareness Workshop

CV Preperation
Letter of Intent Preperation
Job Search and Application
Job Matching

03



Career Planning Consultancy Services

Aim Setting
Work Permission and Work Placement
İş-Kur Registrations

04



Vocational Courses

with Partner Universities

In order to improve their chances of successful resettlement to a third country, longer stay in Türkiye or return to the country of origin YSYD aims at enabling interested beneficiaries acquire language (English and Turkish) as well as vocational skills based on jobs in demand in Türkiye, Canada, Afghanistan and other countries of origin. The project has been implemented based on the following three (3) pillars:

1. Job demands in countries of origin, temporary countries or destination countries.
2. The current skill set, interest and motivation of the beneficiaries.
3. Institutions in Türkiye that would be able to provide the training based on international standards and certification.

An assessment tool consisting of questions including beneficiary's occupational background, courses attended and interests has been applied to the participants. As a result of the assessment, the beneficiaries were being matched to the available field of vocation at the arranged education centers in the project locations. In line with the assessment results and the consents of the beneficiaries, the registrations of the beneficiaries have been made to the relevant education and certification programs at several institutions such as; Universities' Lifelong Learning Center, Public Education Centers, İŞKUR, private institutions, etc.

Activity supported by the
Canada Fund for Local Initiatives
Activité réalisée avec l'appui du
Fonds canadien d'initiatives locales

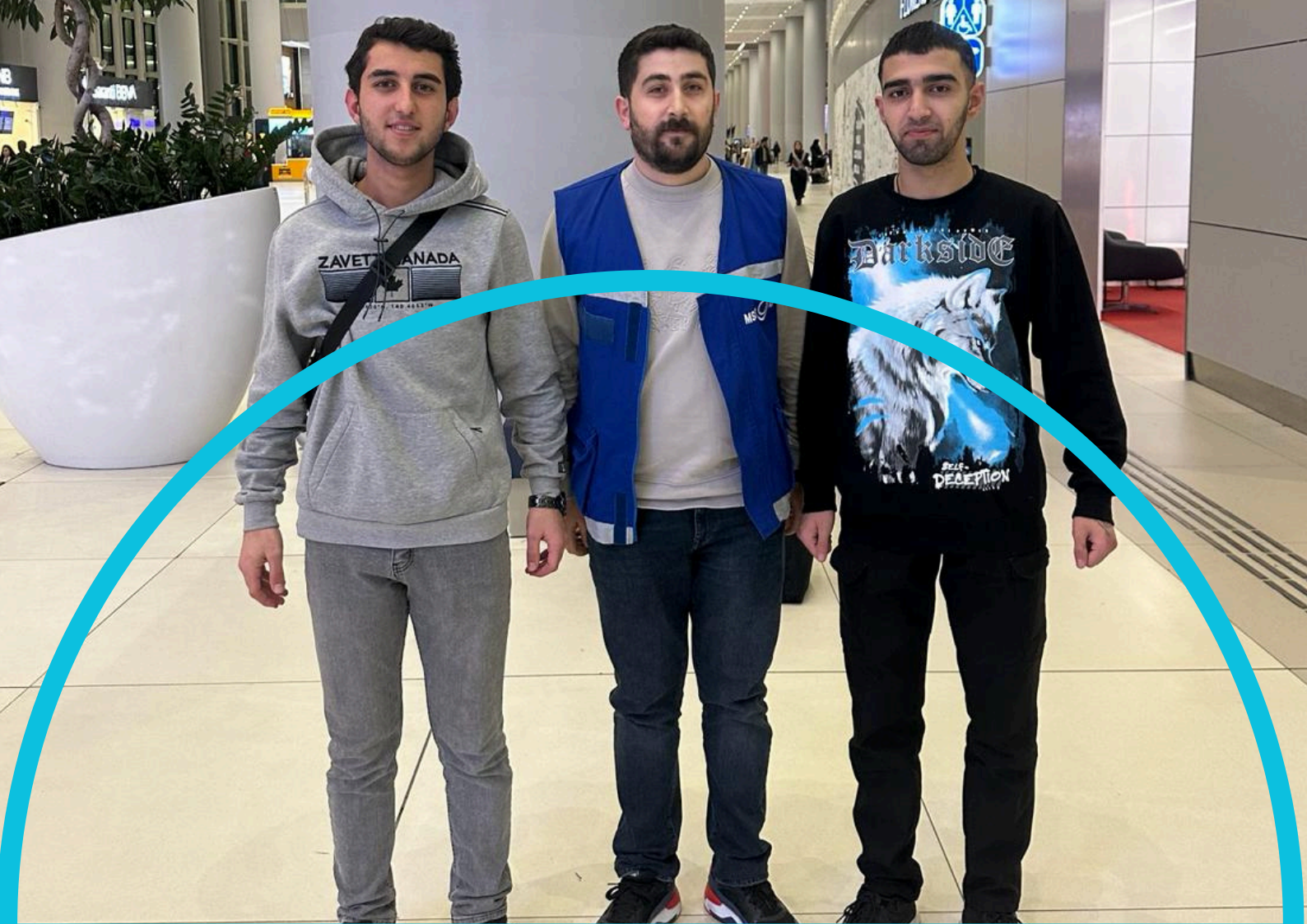
Canada



BİZİ ARAYIN
CALL US
اتصل بنا



ARIF



REINTEGRATION



Reintegration

Voluntary Return

Our Voluntary Return and Reintegration Programme is a programme for Turkish citizens from European Union member countries who are considering returning to our country. This process consists of a series of sub-processes, from thinking about returning to our country to making a decision, from organising the return process to post-return reintegration activities. This whole process is accompanied by individual counselling before, during and after return. Your assigned counsellor will explain the support options available to you for the return process and reintegration.

Reintegration

Voluntary Return

The day-to-day management of cases is managed by YSYD in RIAT, the Reintegration Assistance Tool, owned and managed by the European Commission (COM) (DG HOME). While care plan objectives are being prepared with the participation of returnee, economic, social and psycho-social dimensions and individual, community and structural levels are taking into consideration to ensure sustainable reintegration activities.



Performing outreach and counseling methodologies; supporting return counsellors; implementing pre-departure activities to facilitate successful return

On-arrival support includes airport pick-up, arrival assistance for the immediate necessities, onward transportation, emergency housing, short-term medical assistance.

Immediate assistance upon arrival, organised and coordinated between the responsible Member State (MS) and the YSYD prior to departure of the returnee. The package will be in the amount of EUR 615, equivalent to 3 days of the average global daily rate for TC (EUR 205/day).

Assistance beyond immediate arrival which is discussed and agreed between the RP and the returnee during one or more meetings in the country of return. This process can also start before departure and be (partly) agreed between the returnee and the return counsellor. This assistance covers one or more forms of following assistances: cash assistance, long-term housing, regular medical assistance, education including schooling and vocational training, job counselling and assistance in accessing labour market, legal counseling, administrative reintegration, psycho-social support and family reunification.



As concluding this annual report detailing the humanitarian relief activities of YSYD, we are filled with a sense of gratitude and accomplishment. Throughout the past year, our organization has remained steadfast in its commitment to providing assistance to all people in need across various regions of Turkey. From the bustling streets of urban centers to the remote villages nestled in the countryside, our efforts have reached those who require our support the most.

Our commitment to protection remains unwavering as we strive to safeguard the rights and dignity of the most vulnerable individuals and communities. Through targeted interventions, advocacy, and capacity-building initiatives, we have worked tirelessly to address the unique challenges faced by refugees, internally displaced persons, women, children, and other marginalized groups. By strengthening protection mechanisms and promoting inclusive policies, we continue to empower individuals to assert their rights and live with dignity.



YEAR OF 2023 - SHARE THE KINDNESS

INFO@YSYD.ORG
0 850 455 00 00





We extend our deepest gratitude to all our supporters, donors, partners, and stakeholders who have made our humanitarian endeavors possible!